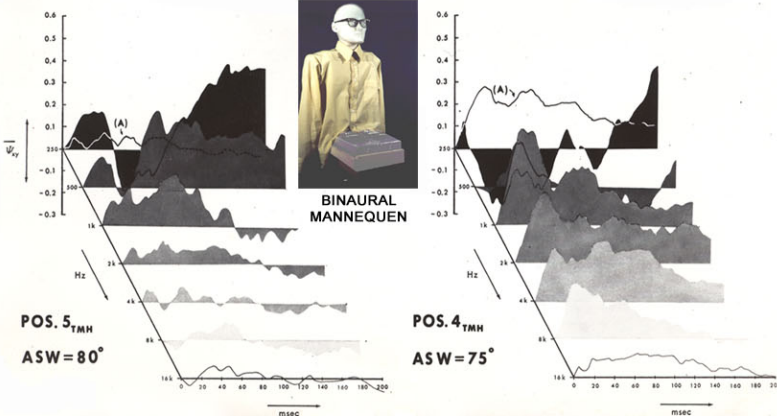
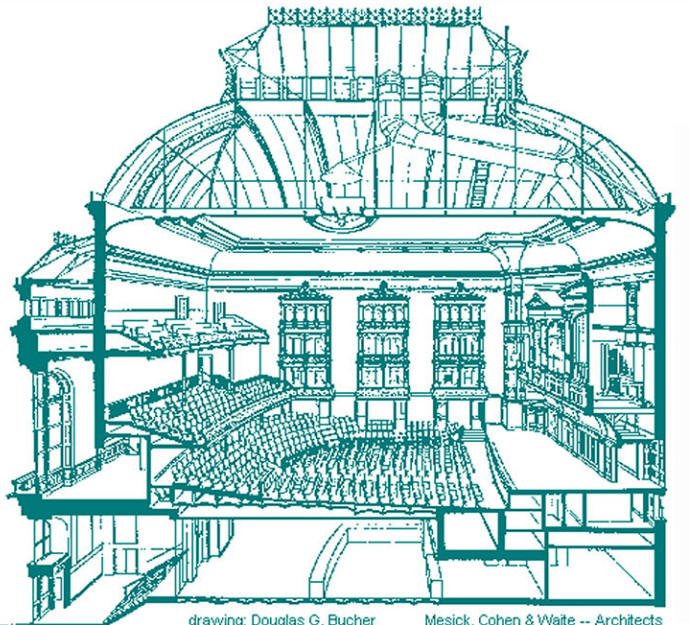
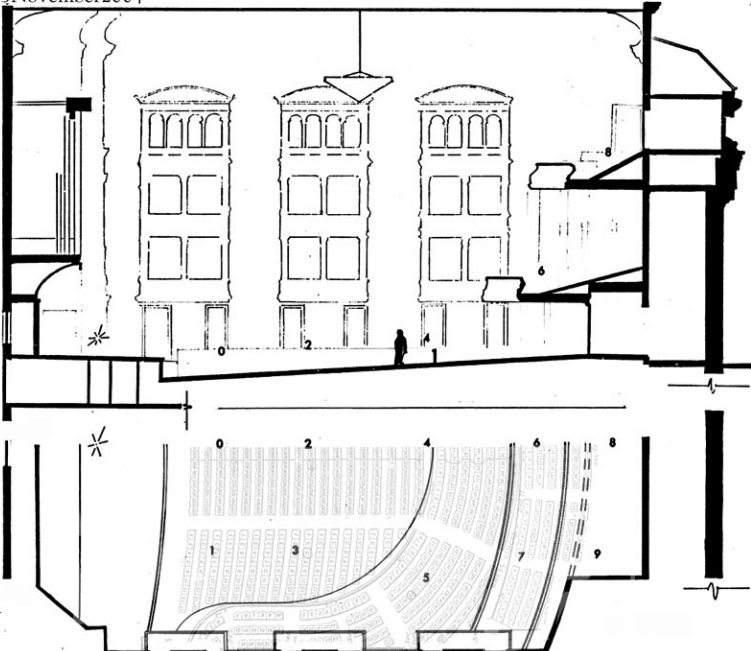


# MCH

McKAY CONANT HOOVER INC  
Acoustics and Media Systems Consultants



**SHORT-TERM RUNNING BINAURAL CROSS-CORRELATION COEFFICIENT AS A FUNCTION OF FREQUENCY AND TIME CORRELATES INVERSELY WITH APPARENT SOURCE WIDTH & SENSE OF ENVELOPMENT IN SOUND FIELD.**  
See: "Physical Correlates to the Spatial Impression in Concert Halls through Binaural Simulation", Journal of the Acoustical Society of America, 59, Supp. 1, 1976. plus "A Binaural Simulation Approach to Predicting Immersion in the Concert Hall Sound Field", paper presented at the 60th meeting of the Audio Engineering Society Convention, Los Angeles, CA 2May78  
Also: "IACC, ASW and Time / Frequency Characteristics of Binaural Running Cross-correlation in Concert Halls", paper at Acoustical Society of America, San Diego, CA 5November2004



drawing: Douglas G. Bucher Mesick, Cohen & Waite -- Architects

The Troy Savings Bank Music Hall opened April 19, 1875, 25 years prior to Boston Symphony Hall. Since then, the world's best known classical and contemporary musicians have appeared in and/or recorded in the Music Hall including Sergei Rachmaninoff, Vladimir Horowitz, Arthur Rubenstein, Benny Goodman, Ella Fitzgerald, Dave Brubeck, Isaac Stern, Yo Yo Ma, Sonny Rollins and Joshua Redman among others. Although its stage is curiously small it still regularly accommodates major orchestras and is a home for the Albany Symphony Orchestra. The 1200 seat room enjoys a well-deserved reputation for some of the finest hall acoustics in the USA. The room has been much discussed and studied for its marvelous warmth and acoustical "bloom", largely attributed to its dense materials, stage canopy, shoebox form, very tall ceiling and resulting large volume-to-seat ratio. The first work testing, measuring and demonstrating the importance of low inter-ear correlation strongly influencing the sense of immersion in an acoustic music field was undertaken here by a founder of MCH. Since that work, acousticians around the world have attempted to capitalize on the phenomenon in new room designs.



**TROY MUSIC HALL  
ACOUSTICAL STUDIES  
TROY, NEW YORK**