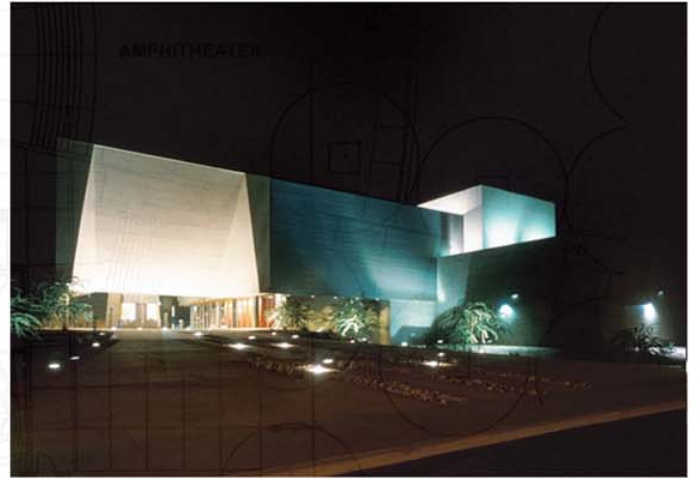




MCH

MCKAY CONANT HOOVER INC
Acoustics and Media Systems Consultants

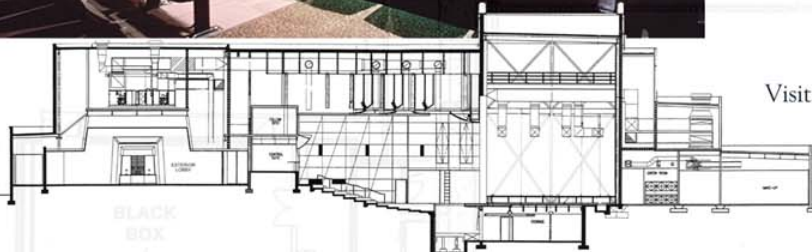


This 29,000gsf facility opened in the Fall of 2002 for the Maricopa County Community Colleges District of Arizona. It comprises a 350-seat multipurpose, variable acoustics Performance Hall, a 150-seat Black Box/Choral Rehearsal room, a large outdoor amphitheater, Scene Shop and support Dressing Rooms, Green Room, Costume Shop, etc. for a growing campus. To preserve both the program and construction budget (\$5.3M), a covered exterior lobby was incorporated into the design that cleverly doubles as a part of the amphitheater performance platform. A fully rigged flytower incorporates flown orchestra shell ceiling elements while shell towers nest backstage. MCH was responsible for AV planning and infrastructure plus full-scope acoustical services covering room acoustics (including variable acoustics via tracked acoustical drapery in the high room volume and design of the orchestra shell) and noise and vibration control. A unique feature of the Performance Hall design are the carefully angled and shaped side walls which redirect acoustic energy from the stage laterally across the audience to enhance the sense of acoustical intimacy and "envelopment" in the room's sound field. The results are impressive both acoustically and visually and nicely serves the programmatic functions of music, dance and musical theater very nicely.



References: Gordon Jesse, Drama, Musical Drama & Dance Faculty (480) 732-7040 or Marcus Denton, Music Faculty, (480) 732-7144; Arlen Solochek, Architect, District Manager Maricopa Community Colleges (480)731-8232

Visit: www.cgc.maricopa.edu/finearts/pa/index.shtml



**PERFORMING ARTS CENTER
CHANDLER - GILBERT COLLEGE
CHANDLER, AZ**