

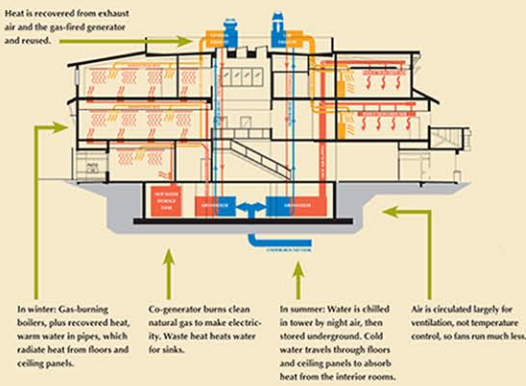


Tahoe Center for Environmental Sciences

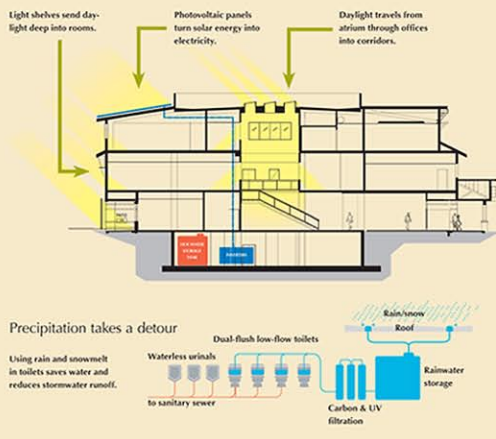
Efficient use of resources

The building uses half the energy of a conventional laboratory/office design through many innovations including:

- Cooling water at night eliminates the use of compressors, refrigerants and their associated emissions.
- Uses "displacement" ventilation in the office areas and, for the first time in the U.S., energy-efficient "active chilled beam" ventilation in the labs.



Getting the most from the elements



MCKAY CONANT HOOVER INC
Acoustics and Media Systems Consultants

The \$24M Tahoe Center houses several major programs within three stories: Sierra Nevada College's science program (teaching laboratories and classrooms), UC Davis research laboratories (Tahoe Environmental Research Center) and public education center, and offices for the Desert Research Institute and Univ. of Nevada, Reno's Academy for the Environment. All these functions are focused on understanding and preserving the unique ecology of the Lake Tahoe watershed. The 45,000sf facility was designed from the outset to meet LEED Platinum certification and, upon opening in 2007 is only the second such building so ranked in the Univ. of California system, the ninth in California and the very first in Nevada. It is truly a state-of-the-art laboratory, education center and demonstration project uniquely designed as a prime example of the very work it undertakes to promote. MCH provided full-scope acoustical consulting and initial AV planning services.

Reference: Todd Lankenau, Collaborative Design Studio
(775) 348-7777

Visit: <http://terc.ucdavis.edu/>

TAHOE CENTER FOR ENVIRONMENTAL SCIENCES
INCLINE VILLAGE, NV